

TRACE™ Program



Trace™ has collaborated with a world leading asset identification, authentication and management organization. Incorporating proven micro-dot technology with an interactive and secure database, Trace™ has changed the way property crime is deterred and detected. www.traceidentified.com

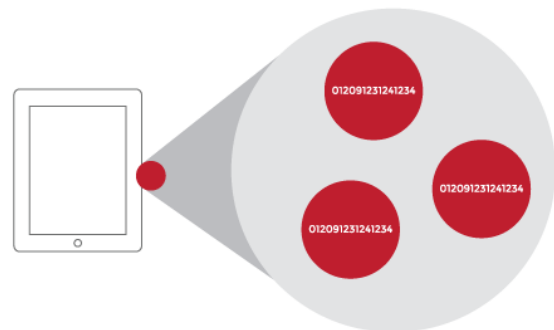
In accordance with police services across Canada, Trace™ has developed a local communication and information campaign that informs the public, pawn shops and second hand stores as to how they can be active participants in theft prevention and theft detection.

Trace™

- Enables police to identify stolen property
- Enables police to return your stolen property
- Enables you, through theft prevention, to make a difference in your community

It all comes down to the odds of getting caught. Informing would-be thieves that the contents of your home are marked and registered with unique identifiable numbers will make them think twice about stealing your property. Adding to the deterrent, Trace™ provides detection equipment to the stores and shops where thieves try to unload their stolen property.

Trace™ pens are filled with thousands of tiny discs, about the size of a grain of sand, suspended in a phosphorous acrylic adhesive. Each tiny disc holds a unique personal identification number (PIN) linking your property to you within a global database. This database is accessed by Law Enforcement agents when they suspect that they have located stolen property.



For over a decade, DNA's technology has been successfully used all over the world by the automotive industry to reduce theft rates for cars and trucks bound for chop-shops because micro-dot marked parts are identifiable even if they have been removed from the originally stolen vehicle.

Each year, millions of dollars in stolen/lost property is not returned as its ownership cannot be determined. Trace™ provides Law Enforcement and other agencies the ability to access ownership information and return property.

Trace™ enables Law Enforcement to go from suspicious to probable cause. Even though an officer may believe a suspect is in possession of stolen property, it is very difficult to detain the suspect or the property as it is hard to identify the rightful owner. Through Trace™, an officer can determine ownership of stolen property thus providing probable cause to hold the suspect for investigation.

Trace™ Pens are available online at:

www.traceidentified.com

Home Hardware

www.homehardware.ca

Local Supplier

Atkinson Home Building Centres - Kingston
731 Development Drive
Kingston, ON
K7M 4W6
Phone: (613) 389 – 6709



Kingston Police Neighbourhood Crime Prevention Programs

- **Neighbourhood Watch**
- **Safeguard Program**
- **CPTED**
- **TRACE Program**
- **Bike Watch**
- **Seniors Watch**



For more Information on this subject please visit the Kingston Police web site www.kingstonpolice.ca or contact the Community Programs Officer cpo@kpf.ca 613-549-4660

Community- Oriented Response and Enforcement (CORE) Unit

Kingston Police
705 Division Street
Kingston ON
K7K 4C2

Emergency- 9-1-1
Non-Emergency- 549-4660